

CaManSys P3d Nw Link

Product Information





Contents

AutoCAD Plant 3D® 1

Seamless Integration..... 1

Seamless Workflow..... 2

 Preparing the Database 3

Create Queries..... 3

 Viewing the data In Navisworks® 4

Contact Information 7

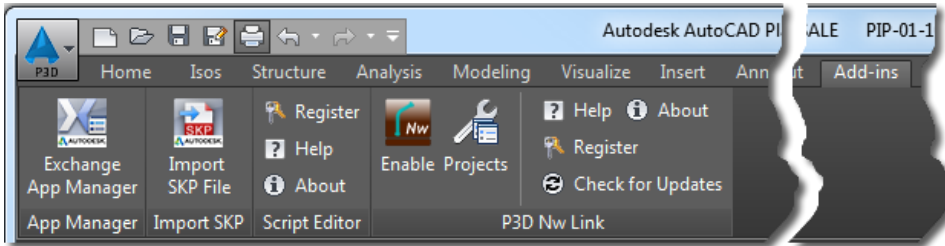


AutoCAD Plant 3D®

CaManSys P3d Nw Link provides a link that allows views to be created in the database and referenced directly by Navisworks through its **Data Tools** feature. The Add-in is only available in Plant 3d Piping/Structural models. It works with SQLite, SQL Server Express, and SQL Server databases.

Seamless Integration

The Add-in merges toolbars, ribbons, and menus with the Piping 3D workspace.



Add-ins Ribbon Tab



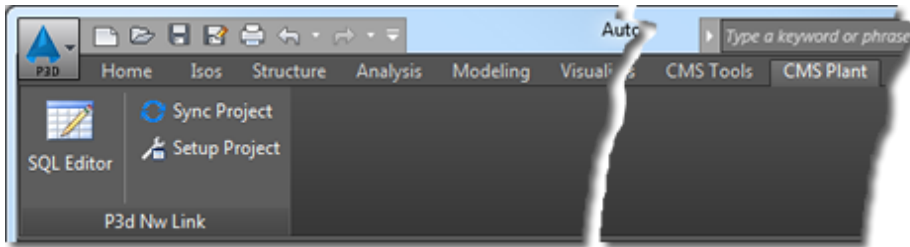
Add-ins Toolbar



Menu



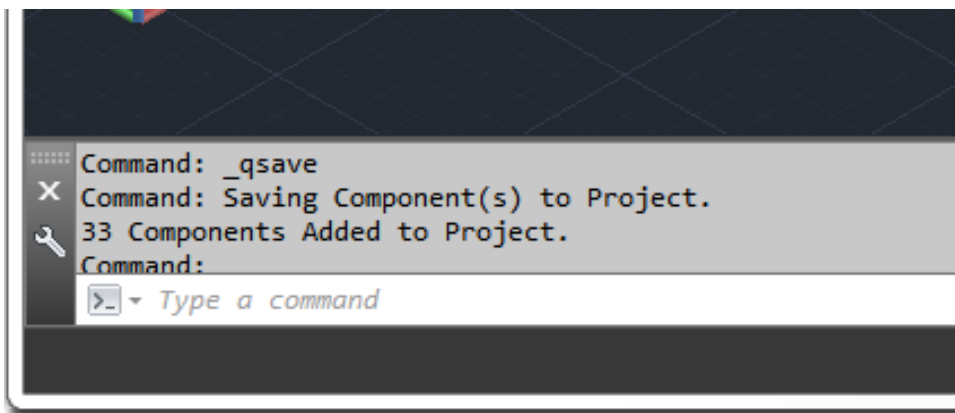
Toolbar



CMS Plant Ribbon Tab

Seamless Workflow

The Add-in required no changes to your company's design processes. Once the add-in is configured for the project, the database is updated everytime the model is saved. A setup wizard is provided to aid in this process. This data is immediately available in Navisworks, once the Data Tools have been configured.



Save Information



Preparing the Database

Create Queries

The professional version includes a Query Editor available inside AutoCAD. With the Standard version, SQLite databases *DB Browser for SQLite* is required, and SQL Server databases need *SQL Server Management Studio*. Your IT/Database Administrator will have more information about your configuration.

The screenshot displays the SQL Editor Pane in AutoCAD. The left sidebar shows a list of views, with 'CMSA_NVSDData' selected. The main editor area contains the following SQL query:

```
1 ALTER VIEW CMSA_NVSDData
2 AS
3
4 --SELECT * from CMSA_ComponentRegistry
5
6
7 SELECT DISTINCT EntityProperties.EntityHandle,
8 EntityProperties.PnPGuid,
9 EntityProperties.PnPID,
10 coalesce(EngineeringItems_PNP.PnPClassName, coalesce(StructureMember_PNP.PnPClassName, coalesce(CMSA_Buttwelds.PnPClassName, null))) as
11 PnPClassName,
12 COALESCE (Pipe_PNP.LineNumberTag, CMSA_Buttwelds.Tag) AS LineNumberTag,
13 --Pipe_PNP.LineNumberTag,
14 COALESCE (Pipe_PNP.[Required Spec], coalesce(CMSA_Buttwelds.NominalSpec, null)) as [Required Spec],
15 COALESCE (Pipe_PNP.Shop_Field, PipeRunComponent_PNP.Shop_Field) as Shop_Field,
16 Pipe_PNP.SpoolNumber,
```

Below the query, the 'Results' tab is active, showing a table with the following data:

EntityHandle	PnPGuid	PnPID	PnPClassName	LineNumberTag	Required Spec	Shop_F
570	0	2484	Pump			
6F5	0	2533	Pipe	1001		SHOP
6D2	0	2549	Tee	1001		SHOP
C8E	0	2552	Valve	1001		SHOP
CAE	0	2554	Valve	1001		SHOP

The status bar at the bottom indicates 'Row: 1 of: 290'.

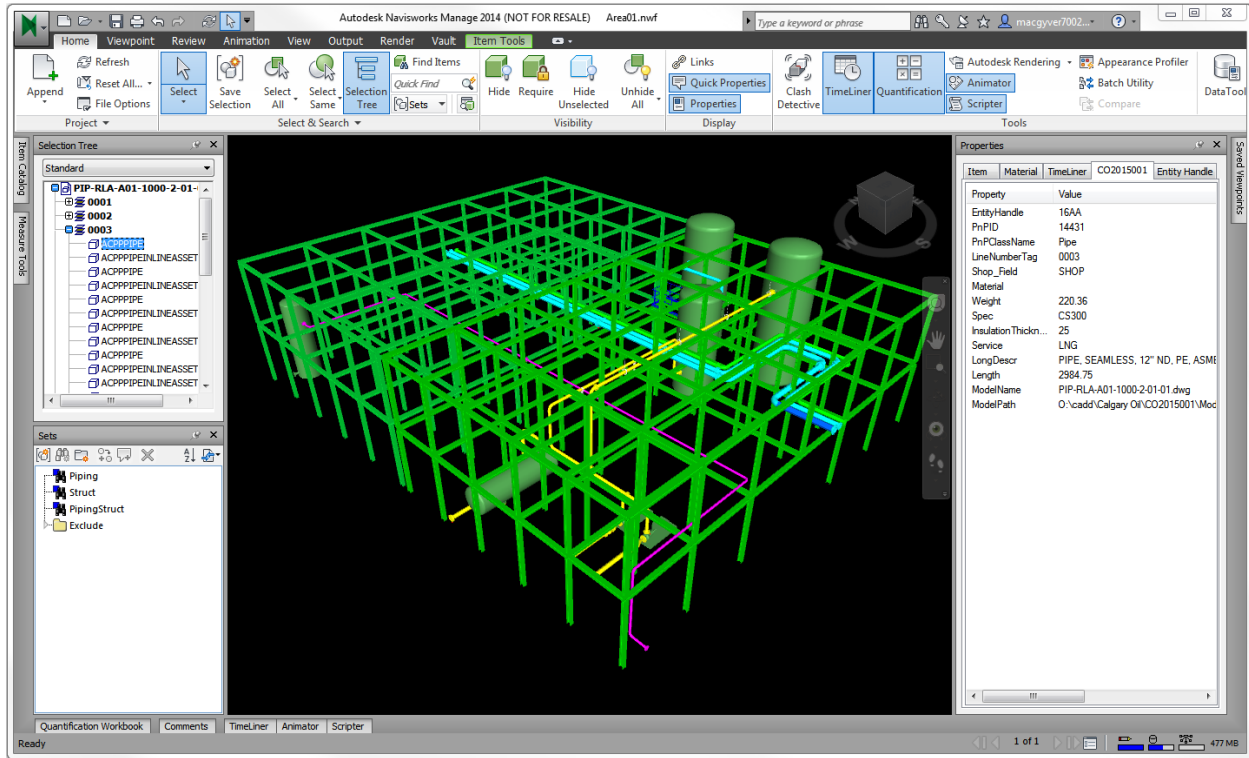
SQL Editor Pane - Professional Version Only



Viewing the data In Navisworks®

Viewing the data In Navisworks®

Once the views are configured in the project database and the Data Tools are set up, the Plant 3D Component Properties are available in Navisworks immediately.



Plant 3D® data in Navisworks®



Viewing the data In Navisworks®

The screenshot shows a 'Properties' window with a tabbed interface. The 'Entity Handle' tab is selected, displaying a table of properties and their values. The table has two columns: 'Property' and 'Value'. The properties listed include EntityHandle, PnPID, PnPClassName, LineNumberTag, Shop_Field, Material, Weight, Spec, Insulation Thickn..., Service, LongDescr, Length, ModelName, and ModelPath.

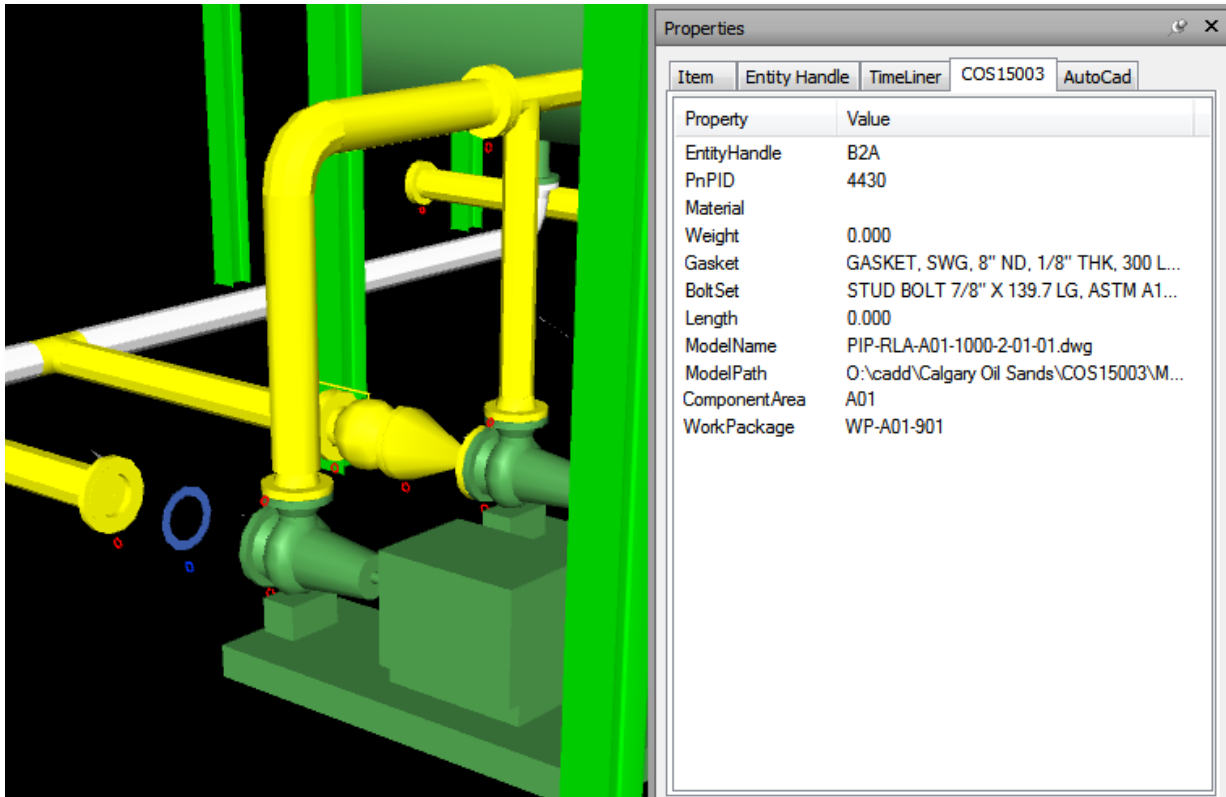
Property	Value
EntityHandle	16AA
PnPID	14431
PnPClassName	Pipe
LineNumberTag	0003
Shop_Field	SHOP
Material	
Weight	220.36
Spec	CS300
Insulation Thickn...	25
Service	LNG
LongDescr	PIPE, SEAMLESS, 12" ND, PE, ASME
Length	2984.75
ModelName	PIP-RLA-A01-1000-2-01-01.dwg
ModelPath	O:\cadd\Calgary Oil\CO2015001\Mod

Navisworks® Property Pane



Viewing the data In Navisworks®

Views can be created to show any data that exists in the database.



Bolt and Gasket Data



Contact Information

Web: www.camansol.com

Email: sales@camansol.com

Phone: 877.679.4965

Click [here](#) for more information.